

SEDGWICK PARISH COUNCIL CANAL REPORT

November 2024

The first hard frost of the season has seen the last of the autumnal leaves off so it is looking very wintry all of a sudden!

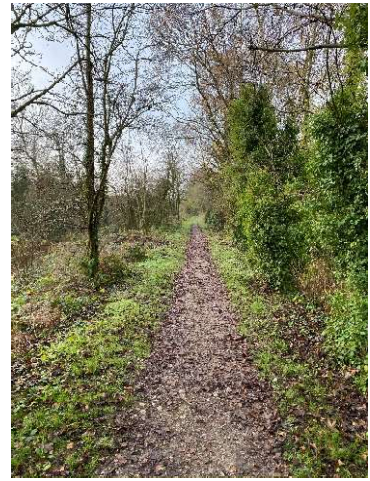
Trees: Our Annual Woodland Survey found that our tree stock had fared well over the last year and although Ash Die back and Dutch Elm Disease is evident, there is no action required. James Park will quote for his annual winter maintenance tasks when he comes to plant the hedge. There are several sycamore and goat willow saplings that need removing from the canal bed. And the path might need remedial patching (see below)



Vegetation: The grass verges have died back nicely and there are no overhanging branches

Benches: The first bench is wobbly and needs JP to make sure that it is bedded in properly.

Paths: Paths are full of recently fallen leaf mould – it is hard to tell where the repairs are needed at the moment as they are quite clear but we will need to mark the patches as soon as it becomes evident. The steep path was not slippery when I inspected but we need to monitor especially the rail.



Boundaries, Walls and Fences – Mr Simpson has been to repair two sections of the wall – the long stretch and the shortest. Both repairs look excellent. This only leaves the part pushed over by the sloe tree and the minor repair slightly before it.



Signage: All are sturdy but the waymarker needs a re-varnish.



Usage: seems busy – I didn't see any dog poo on the floor but now the leaves have fallen off there are signs of dog poo bags in trees.....

CRT: It looks like some maintenance may have occurred- the vegetation around the art installation has been chopped back as has the sycamore vegetation up the aqueduct steps – it is unknown who carried this out but the steps are now passable. The path over the aqueduct is already the muddiest part of the whole stretch.



PS the signage at the foot of the aqueduct will need a re-varnish in the Spring – I have added and appeal to the Xmas newsletter.

JP maintenance

Remove weed saplings from canal bed

First bench check

Patch Path and steep path

